

# **How to Prepare the Materials for Digital Citylight**

**Digital citylight – digiCLV – are LCD screens with FullHD resolution. The pictures are installed vertically. Picture parameters are (w x h) 1080 x 1920 pix.**

Graphics is best to prepare vertically, but save horizontally, turned by 90° clockwise – see picture below. The system will turn the graphic when displaying it.

Deadline for material submission is max. 3 work days before the start of your campaign.

## **Possible formats for material submission:**

### **Photo:**

format: PNG, TIFF, TAG, JPG, without compression  
resolution: 1080 x 1920 pixels (vertical)

### **Video:**

format: WMV - Windows Media Video 9, MOV (codec H264)  
picture sequence: PNG, TIFF, TGA, JPEG (100% quality)  
frame rate: 25  
resolution: 1080 x 1920 pixels (vertical)  
progressive scan  
pixel aspect ratio: 1,0000 (Square)  
Bit rate: 16 M  
Audio: None  
Total time: 6 sec

At the beginning and end of the video put two completely black shots. These shots will be above the limit of Your six second video. In the video itself blend your graphics at the beginning and end with three shots of blackness.

Your sequence should thus look as follows:

2 black shots, 150 shots of your graphic (out of that the first three shots fade in and last three fade out into black), 2 black shots.

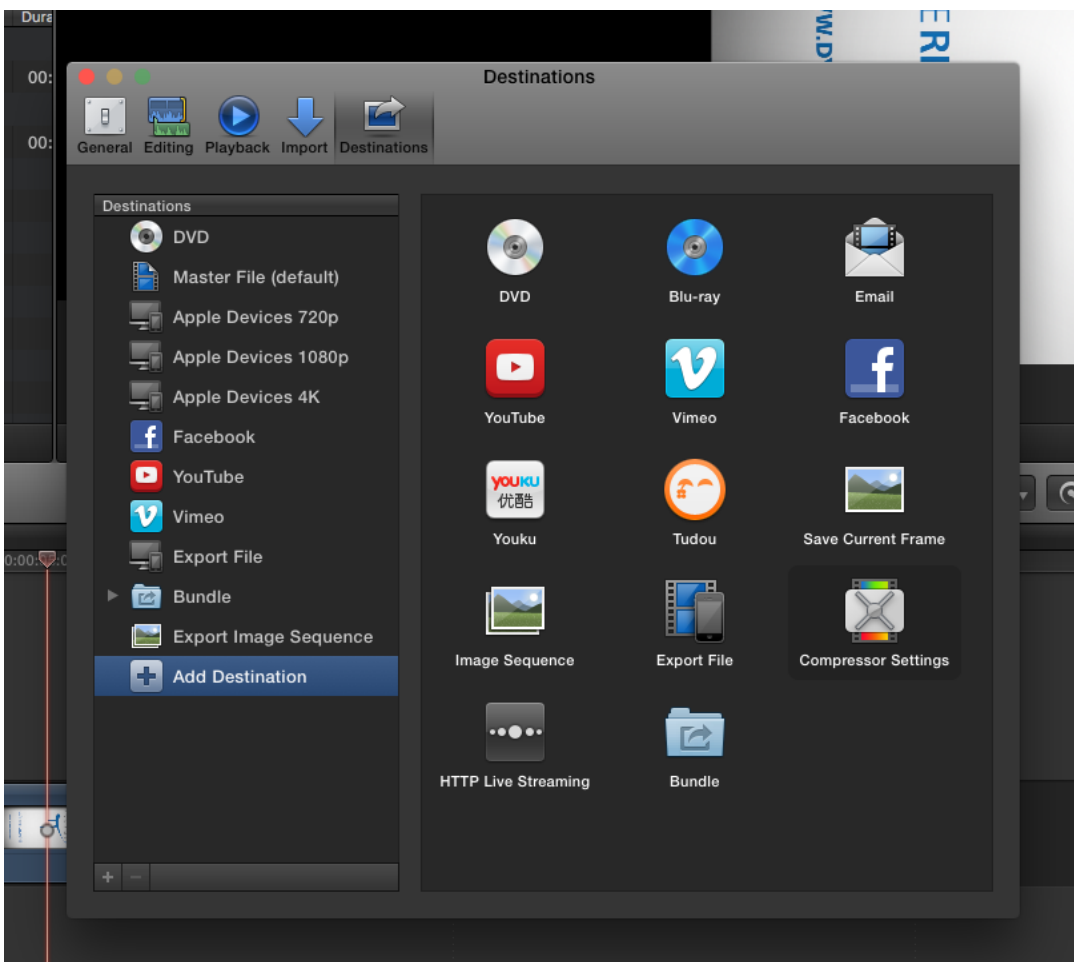
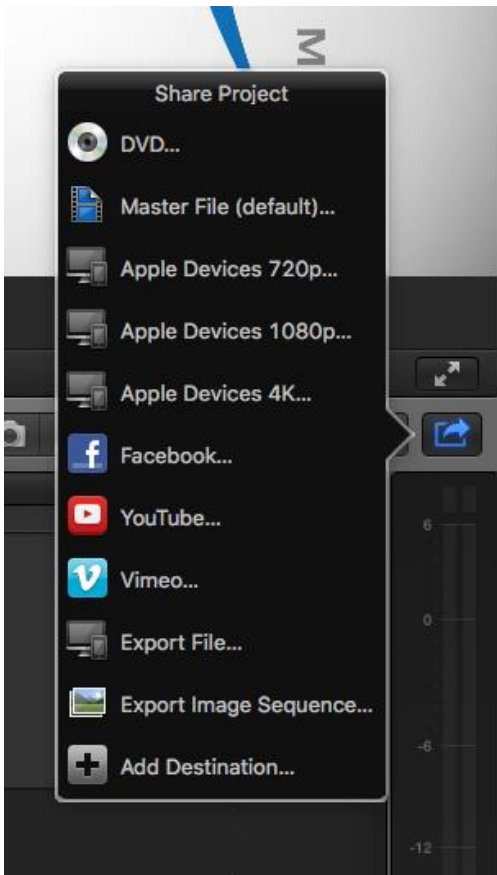
In total this makes 154 shots, out of that 150 is Your graphic. (25 shots per second times 6 seconds = 150 shots)

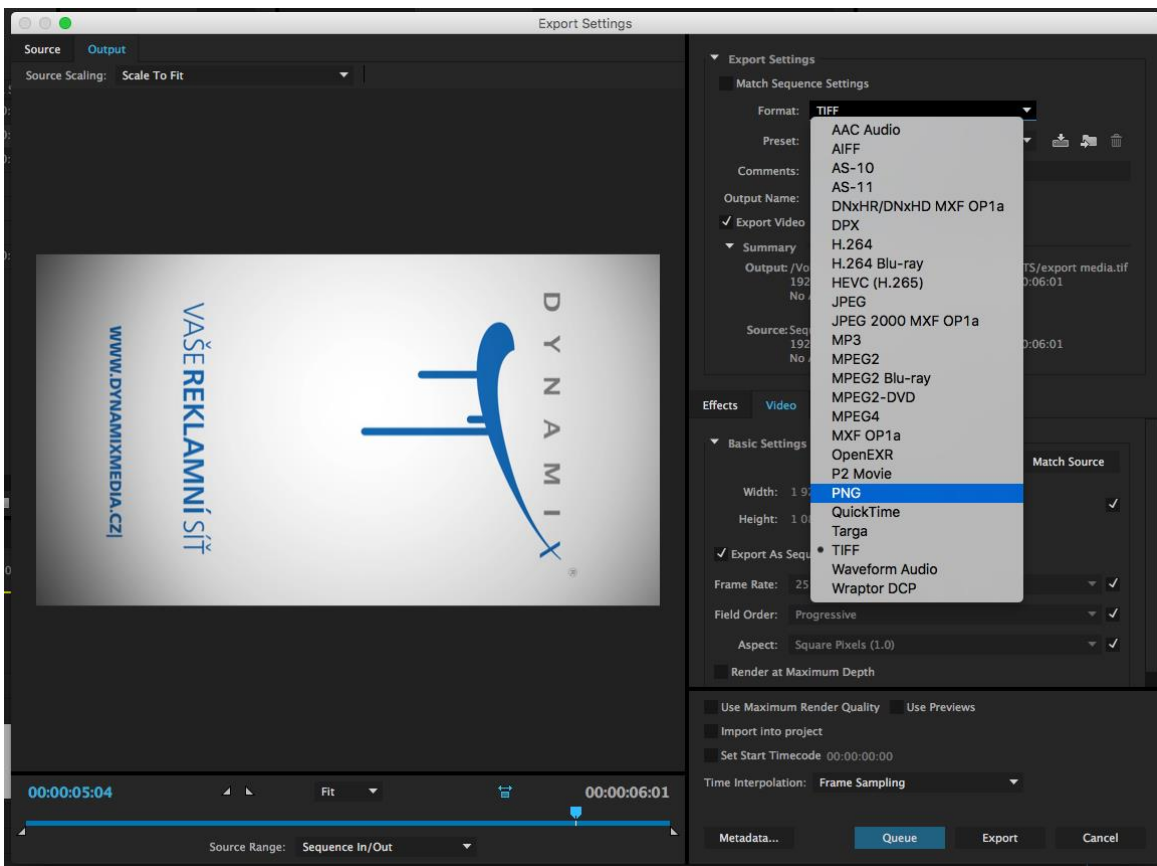
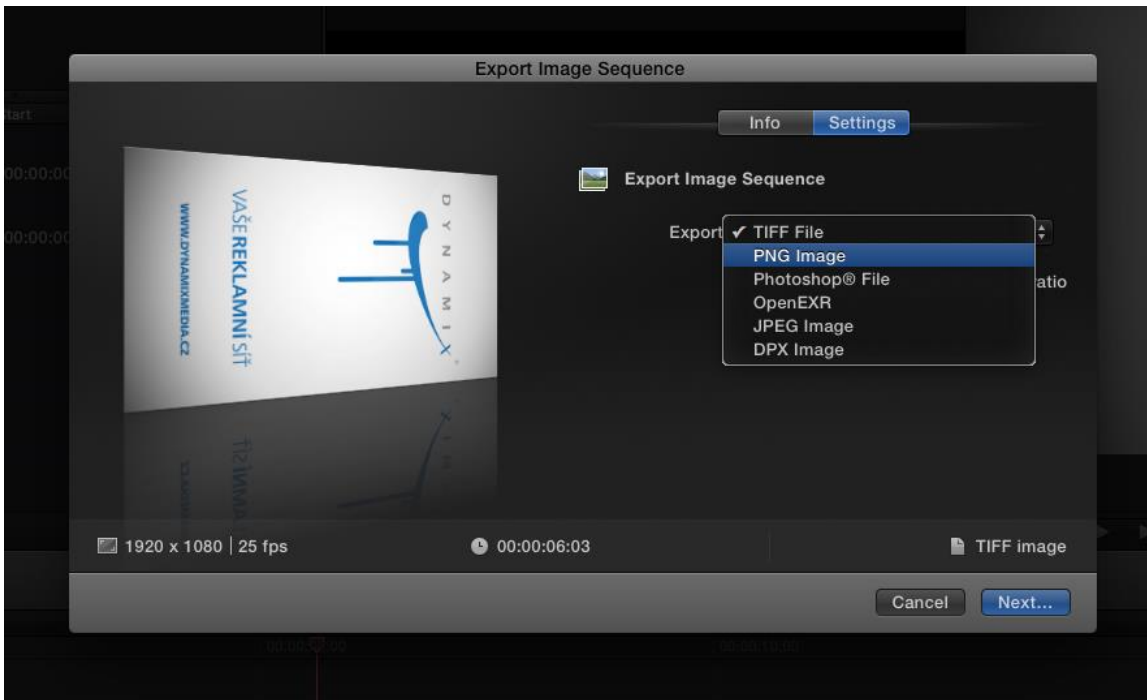
## **How to export from the Apple Final Cut Pro X program:**

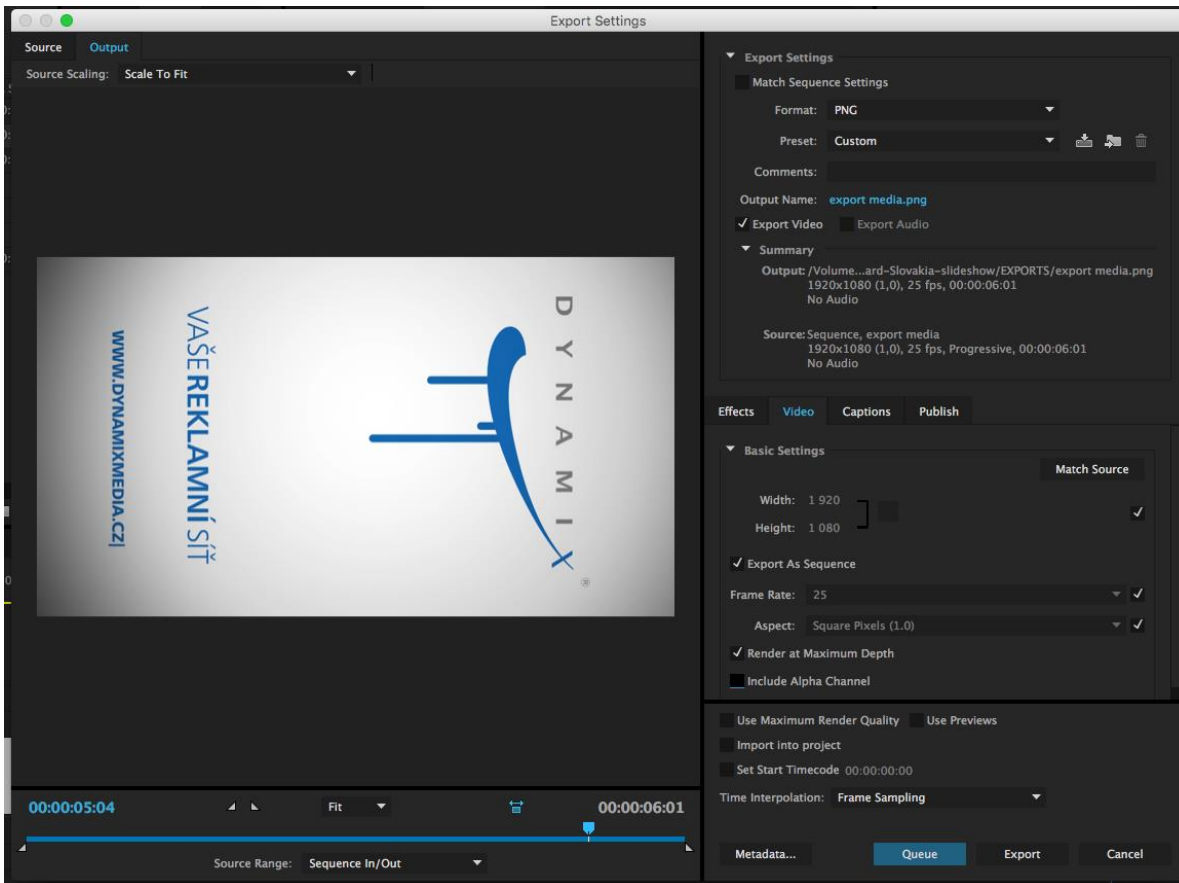
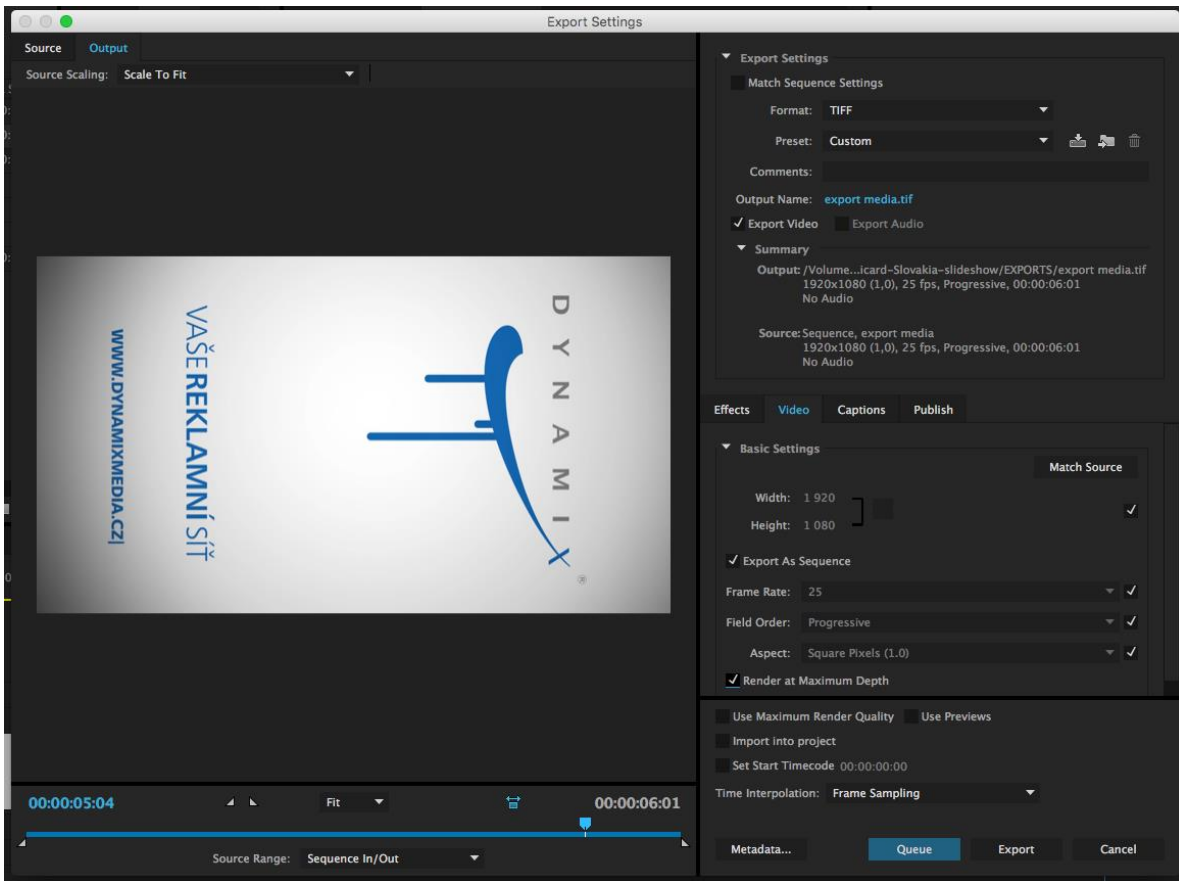
For the export of your video choose Share Project and afterwards "Export Image Sequence..." from the selection bar (pic. 1). If this choice isn't available, you can add it by clicking on "Add destination..." down in the selection bar (pic. 2). Afterwards pick between TIFF or PNG (pic. 3) picture sequence and export the video.

## **How to export from the Adobe Premiere CC program:**

Before exporting, select on the timeline the sequence meant for export (keys I, O) and call up the export options (cmd + M). Here you should pick between format TIFF or PNG (pic. 1) and check whether you have selected options "Export as Sequence" and "Render at Maximum Depth" (pic. 2 for TIFF and pic. 3 for PNG). Then export the video.







Graphics is best to prepare vertically, but save horizontally, turned by 90° clockwise – see picture above.

**Recap:**

Resolution: 1920x1080

Bit rate: 10-16M

Pixel aspect ratio: 1,0 (square)

Frame rate: 25, progressive scan

Formats: WMV, MOV (kodek H264), picture sequence: PNG, TIFF, TGA, JPEG (100% quality)

Examples of spots and graphics available at <http://www.dynamixmedia.cz/references>

Materials below 20MB can be sent via email to [vanek@dynamixmedia.cz](mailto:vanek@dynamixmedia.cz), if the final file is larger, please use ftp server.

Libor Vaněk  
Dynamix media s.r.o.  
Jinonická 80  
158 00 Praha 5  
Tel.603 469 036

